

HYDRAULIC PULLERS

BETEX HP 2/3-arm pullers, with integrated pump and cylinder



Compact, ergonomic design, easily operated by one person!

- **Multifunctional:**

These HP-pullers are ideal for pulling a wide variety of parts, including bearings, bushings, wheels, gears and pulleys. Applications for HP-pullers will be found in motor repair shops, service companies, maintenance shops, industry, mining, paper mills, chemical plants, shipping, offshore, etc.

- **Compact:**

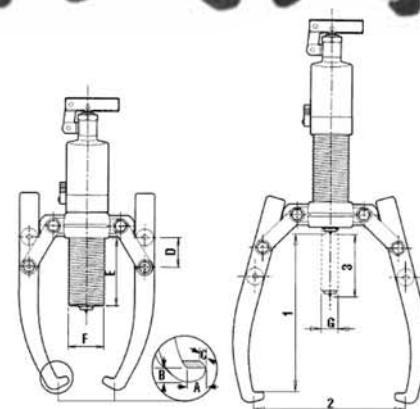
The self contained hydraulic pump and cylinder save space, as you don't need a separate pump, hose or puller.

- **Strong:**

The harder the force, the tighter the jaws grip. The arms cannot bend or deflect.

- **Economical:**

2/3-arm combination puller, 2 pullers for the price of one, including integrated pump and cylinder!



- **Safe:**

The improved integral safety release valve prevents overloading and ensures that you will never exceed the maximum power capacity.

- **Versatile:**

Various accessories are available. Sets are supplied in practical PE case and consist of a puller block, connecting rods and a set of bearing splitters.

4, 6, 8, 12, 20 and 30 ton capacity!

BETEX HP 2/3 Hydraulic pullers

For accessory sets see page 16, 17.

Type	Art.no.	Cap. ton	Max. shaft length mm	Max. spread mm	Stroke mm	A mm	B mm	C mm	D mm	E mm	F mm	G mm	Weight Kg
HP 43 *	791000	4	185	275	60	11	6	22	32	84	42	22	4.5
HP 63 *	792000	6	215	300	85	11	10	25	51	122	45	25	6.5
HP 83 *	793000	8	230	350	85	11	10	25	51	122	50	25	6.5
HP 123 *	794000	12	270	375	85	14	10	29	51	118	60	28	8.0
HP 203**	796000	20	360	520	111	20	27	33	60	161	80	40	22.0
HP 303 **	797000	30	360	550	111	20	27	38	60	155	68	50	32.0

* Incl. safety net ** incl. safety blanket

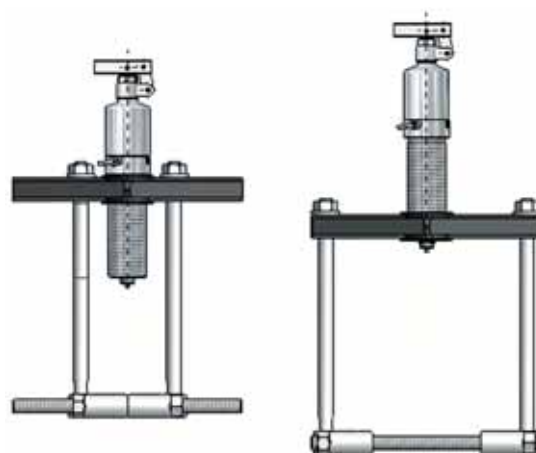
ACCESSORY SETS

BETEX Bearing splitters

This accessory set consists of:

- 1 puller block
- 2 connecting rods (legs)
- 1 set of bearing splitters for a min./max Ø 25-225 mm

You can use the cylinder from the HP/HSP/HXP series.



ACCESSORY SETS FOR 4, 6, 8, 12 TON PULLERS HP, HSP, HXP, HPP

Type	Art.no.	Cap. ton	Shaft length mm	Min/max Spread mm	Weight kg
Acc. Set HP 43, HSP 43	791100	4	250	Ø 15-110	8.5
Acc. Set HP 63, HSP 63,	792100	6	280	Ø 25-150	12.5
Acc. Set HP 83, HSP 83, HXP 83	793100	8	280	Ø 40-150	12.5
Acc. Set HP 123, HSP 123, HXP 123, HPP 123	794100	12	325	Ø 45-225	18.0

ACCESSORY-SETS

BETEX Tri-section plates



Easy to use

The tri-section plates are specially designed to be used in conjunction with the three-armed pullers. The unique and patented swivel design creates maximum spread and applies even force at the most efficient point. The plates grip behind the inner and outer rings of the bearing, preventing the pulling force from being transmitted through the moving parts, minimizing the risk of bearing damage.

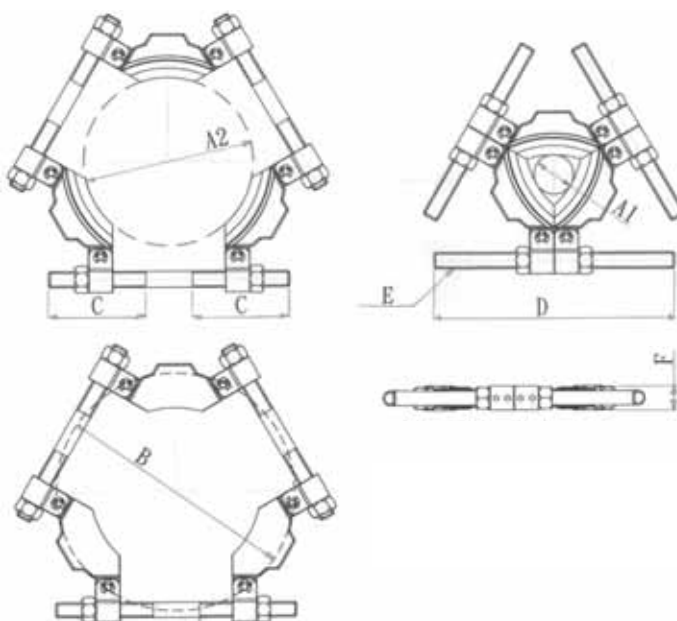
User-friendly

- Unique, patented swivel design creates maximum spread.
- The tri-section construction provides even-force distribution, preventing bearings from locking and/or tilting on the shaft during removal.
- Suitable for use in conjunction with all three-armed hydraulic pullers.
- Available in a wide range, covering the most common shaft sizes.

The Tri-section plate series consist of 4 different sizes of tri-section plates that are suitable for shafts of max. Ø ranging from 50 to 495 mm (2" to 19.5").

Use in combination with

Tri-section 160: HP/HSP 43, 63
 Tri-section 210: HP/HSP 63, 83
 Tri-section 340: HP/HSP/HXP 83, 123, 203, HPP 123
 Tri-section 495: HP/HSP/HXP 203, 303



Typ	Art.no.	Cap. ton	Available shaft diam		Spread	C	D	E	F	Weight
			A1 mm	A2 mm	B (mm max)	mm	mm		mm	kg
Tri-section 160	791160	6	26	160	216	105	240	5/8"-11UNC	8	3.5
Tri-section 210	791210	8	50	210	280	115	285	3/4"-16UNF	31	5.5
Tri-section 340	791340	20	90	340	460	170	430	7/8"-14UNF	45	16.5
Tri-section 495	791495	30	140	495	660	240	600	1"-14UNF	61	41