

AM4023X



The Dino-Eye Premier AM4023X digital eyepiece is a very adaptable digital eyepiece that can fit 23mm, 30mm, and 30.5mm eyepiece slots with its included adapters with its tubular design that is great for setting the right focal point for different types of microscopes. It has a 1.3 Megapixels sensor with the ability for long exposures that's great for low light visibility. It allows clear and visible examination of specimens and superb viewing on a computer monitor.

The Dino-Eye can be found useful in a laboratory for observation and documentation, a production line for inspection, and much more. In addition to the merit of digitization, the user can find the experience of using a microscope to be more pleasant and comfortable especially for daily microscope users.

Overview



Enhanced 1.3 Megapixels

It observes with accurate color reproductions and retain details under low lighting with the optimum resolution for detailed live preview and captured images.



USB 2.0 Interface

Digitize the microscopy experience; allow easy recording and sharing of observations in the office or out in the field with a compatible PC or MAC.



Multi - adaptable eyepice

Adapts to most microscopes with 23/30/30.5mm inner diameter eyepiece slots.



Professional measurement tools

Use professional measurement tools that are calibratable for assured accuracy and conveniently document or share information with the bundled software.

Specification

Model : AM4023X Dino-Eye

Interface : USB 2.0

Product Resolution : 1.3M pixels (SXGA)

Sensor : Color CMOS

Frame Rate : Up to 30fps

-Save Formats:

+ Image:

DinoCapture2.0: BMP, GIF, PNG, MNG, TIF, TGA, PCX,
WBMP, JP2, JPC, JPG, PGX, RAS, PNM

DinoXcope: PNG, JPEG

+ Movie:

DinoCapture2.0: WMV, FLV, SWF

DinoXcope: MOV

Operating System Supported : Windows 10, 8, 7, Vista, XP;

Mac OS 10.4 or later

Calibration Function : Yes

Measurement Function : Yes

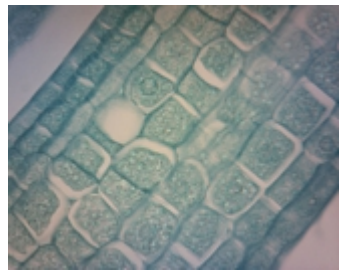
Unit Dimension : 48mm (H) x 23mm (D)

Fits 23mm diameter eyepiece slot

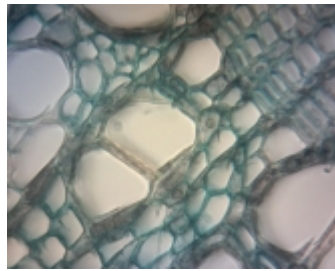
Unit Weight : 100g +/- 10g

Package Dimensions : 16cm (L) x 16cm (W) x 6cm (H)

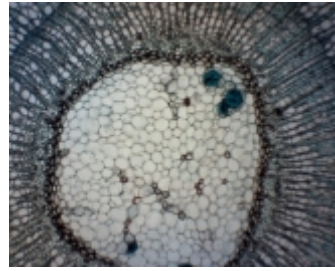
Gallery



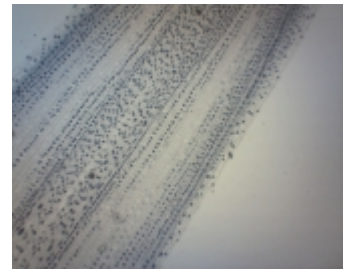
vertical of sweet corn



vertical of sweet corn



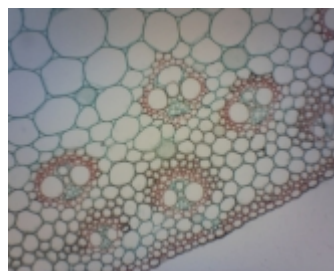
transection of basswood



Onion



human blood



cross section of sunflower



AM4023X