

TC-5915AP Pneumatic Shield Box



Features

- High RF Shielding
- Pneumatic control of lid open-close and optional test fixture motions
- EMI filters on all Data and DC lines
- Easily customizable to meet various test needs
- Red and Green LED's for Pass/Fail indication
- RS-232C Remote Control

Specifications

Mechanical Specifications

Line voltage	DC 24 V, Max. 2 A
Remote control	RS-232C, 3 wire, DB9(s)
Air connection	
Main connector	6 mm OD hose, one-touch push-on fitting
Fixture control connector	4 mm OD hose, one-touch push-on fitting
Input air pressure	5 to 10 bar
Dimension	
Inside	236(W) x 297(D) x 180(H) mm
Outside	324(W) x 432(D) x 252(H) mm, lid closed. 373(H) mm, lid open.
Weight	approx. 11 kg
*Packing	
Size	490(W) x 550(D) x 380(H) mm
Weight	approx. 13 kg

* The size or weight of a package may vary on how to pack a package.

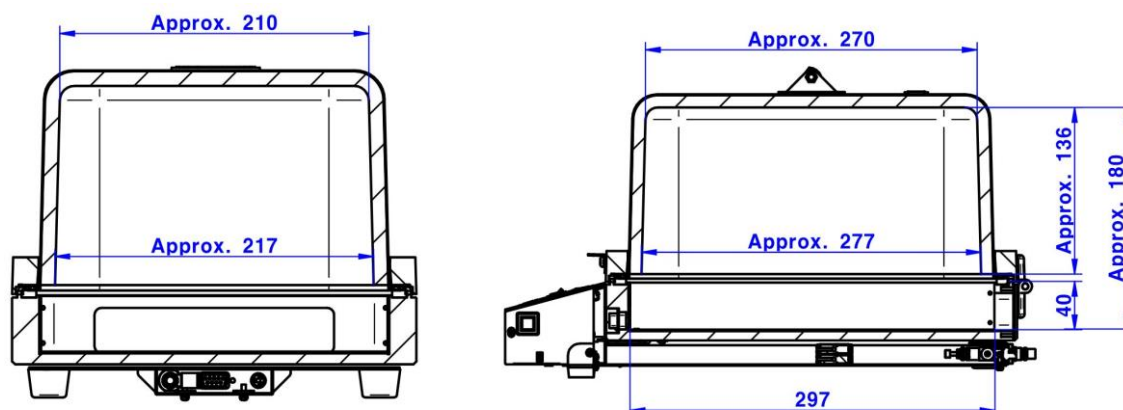
Typical RF Shielding

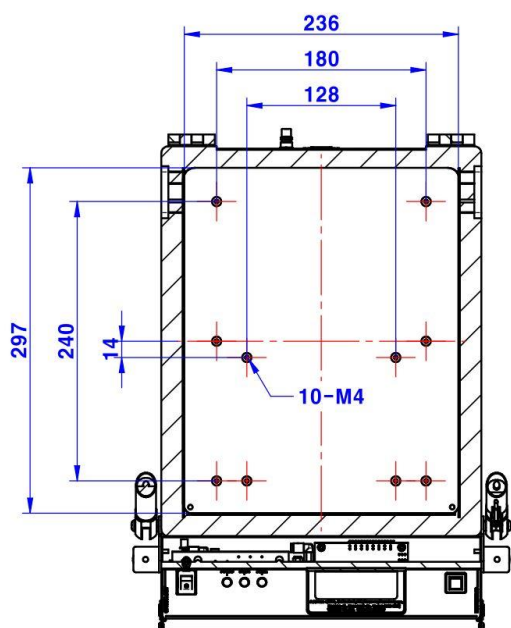
The shielding effectiveness below is measured when the blank panel is mounted; other I/O interface panel results a different shielding effectiveness of the shield box.

Frequency	Shielding effectiveness (dB)
100 to 2000 MHz	> 70 dB
2000 to 3000 MHz	> 70 dB
3000 to 6000 MHz	> 60 dB

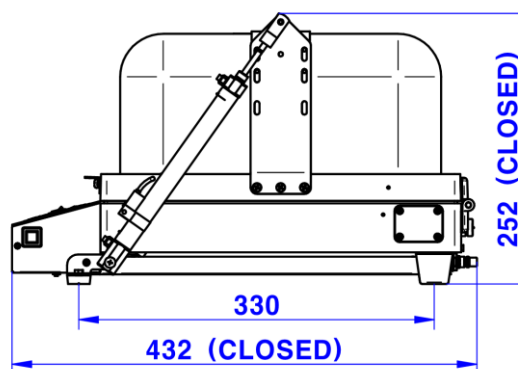
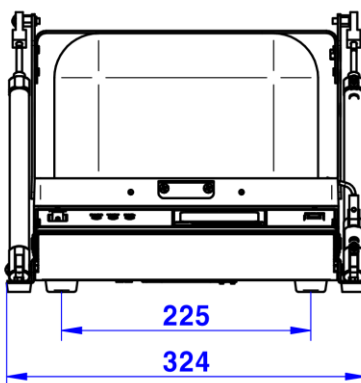
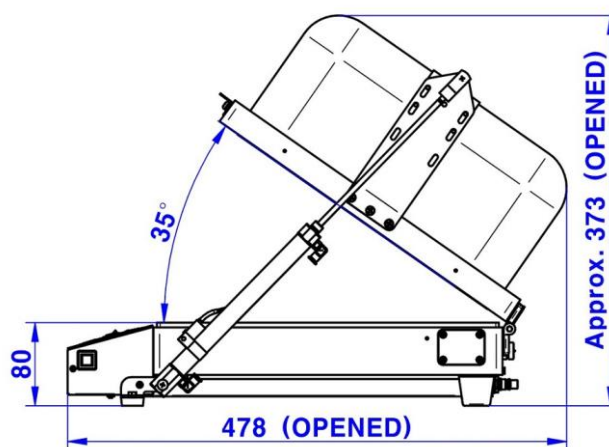
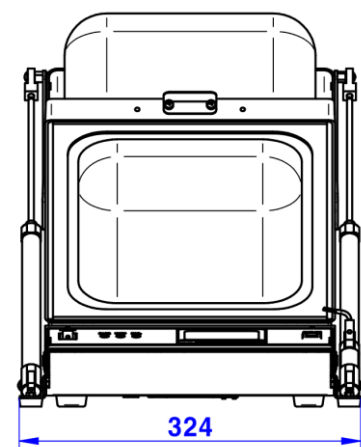
Dimensions

- TC-5915AP Inner Dimension (WxDxH) : 236(W) x 297(D) x 180(H) mm





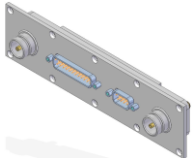
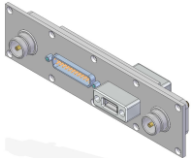
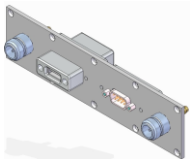
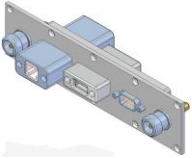
- TC-5915A Outer Dimension (WxDxH) : 324(W) x 432(D) x 252(H) mm, lid closed.
373(H) mm, lid open.



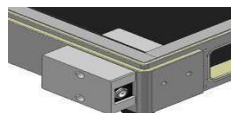
Ordering Information

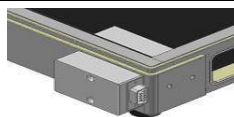
Order Number	Description
TC-5915AP	Pneumatic Shield Box (including accessories below)
	Test Report
	RF Cable, SS-402, N(m) to N(m) 1 m, 1 pc
	RS-232C Cable, DB9(p) to DB9(s) cable 2 m, 1 pc
	Air Coupler, 1 pc
	Switching Power Supply, 1 pc

Pre-Configured I/O Interface Panel

I/O Interface Panel	Order Number	Configuration
 Data Interface Panel	M591502B	<ul style="list-style-type: none"> two(2) N (f) ouside and SMA (f) inside one(1) DB9(p) outside and DB9(s) inside, 1000 pF Pi filter one(1) DB25(p) outside and DB25(s) inside, 1000 pF Pi filter
 Data Interface Panel	M591502D	<ul style="list-style-type: none"> two(2) N (f) ouside and SMA (f) inside one(1) DB25(p) outside and DB25(s) inside, 1000 pF Pi filter one(1) USB 2.0 outside and inside
 Data Interface Panel	M591542B	<ul style="list-style-type: none"> two(2) N (f) ouside and SMA (f) inside one(1) DB9(p) outside and DB9(s) inside, 1000 pF Pi filter one(1) USB 2.0 outside and inside
 Data Interface Panel	M591518A	<ul style="list-style-type: none"> two(2) N (f) ouside and SMA (f) inside one(1) DB9(p) outside and DB9(s) inside, 100 pF Pi filter one(1) USB 2.0 outside and inside one(1) RJ-45 outside and inside

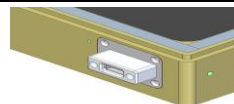
Pre-Configured Side I/O Interface Panel

I/O Interface Panel	Order Number	Configuration
 DC Power Side Interface Panel	M591532A	<ul style="list-style-type: none"> one(1) DC Power Jack Adaptor



M591533A

- one(1) DB9(p) outside and DB9(s) inside, 1000 pF Pi filter

DB9 Side Interface Panel


M591534B

- one(1) USB 2.0 outside and inside



USB 2.0 Side Interface Panel

Custom I/O Interface Panel

- Customized I/O Interface Panel is available by selecting below I/O interfaces and combine.

Please contact Tescom sales team or your local distributor.


I/O Interface	Description / Order Number	Typical Data Rate / Line Voltage	*Typical Shielding
	DB25, 1000pF pi Filter / 3409-0009-1	3 Mbps / 100 VDC, 5 Amps max	>70 dB from 0.5 to 2 GHz >80 dB from 2 to 3 GHz >70 dB from 3 to 6 GHz
	DB25, 100pF pi Filter / 3409-0014-1	10 Mbps / 100 VDC, 5 Amps max	>50 dB from 0.5 to 2 GHz >60 dB from 2 to 3 GHz >60 dB from 3 to 6 GHz
	DB9, 1000pF pi Filter / 3409-0008-1	3 Mbps / 100 VDC, 5 Amps max	>70 dB from 0.5 to 2 GHz >80 dB from 2 to 3 GHz >70 dB from 3 to 6 GHz
	DB9, 100pF pi Filter / 3409-0010-1	10 Mbps / 100 VDC, 5 Amps max	>50 dB from 0.5 to 2 GHz >60 dB from 2 to 3 GHz >60 dB from 3 to 6 GHz
	USB 2.0 Filter / 3409-0018A-3	480 Mbps / 5 V, 500 mA / Max Current: 5 A	>60 dB from 0.5 to 2 GHz >70 dB from 2 to 3 GHz >70 dB from 3 to 6 GHz
	USB 3.0 Filter(Active) / 3409-0042A-2	5000 Mbps/ 5 V, 600 mA / Max Current: 1.5 A	>80 dB from 0.5 to 2 GHz >80 dB from 2 to 3 GHz >75 dB from 3 to 6 GHz
	RJ-45 Filter / 3409-0022A	1 Gbit/s Copper-Line Ethernet (1000 BASE-T)	>60 dB from 0.5 to 2 GHz >70 dB from 2 to 3 GHz >70 dB from 3 to 6 GHz
	DC Power Adaptor / 3406-0004A	50 VDC, 3 Amps max	>70 dB from 0.5 to 2 GHz >80 dB from 2 to 3 GHz >80 dB from 3 to 6 GHz
	DC Power Adaptor (Banana Jack Type) / 3406-0005A, 3406-0006A	50 VDC, 10 Amps max	>70 dB from 0.5 to 2 GHz >80 dB from 2 to 3 GHz >80 dB from 3 to 6 GHz
	AC Power Adaptor / 3103-0009A	250 VAC, 7 Amps max	>70 dB from 0.5 to 2 GHz >80 dB from 2 to 3 GHz >80 dB from 3 to 6 GHz

I/O Interface	Description / Order Number	Frequency Range / Impedance / V.S.W.R
	RF, N-SMA Connector / 3408-0038	From DC to 6 GHz / 50 Ω / 1.15 max
	RF, SMA-SMA Connector / 3408-0039	From DC to 8 GHz / 50 Ω / 1.15 max

- Each shielding effectiveness is measured when each I/O interface panel, which is shown above, is mounted.
- Above data was measured by Tescom, The Shielding Effectiveness might be different based on the measuring method and condition.
- This data has been measured under the condition that the cables are not connected to each filters. When the cables are connected it can affect the shielding performance.

Fixture

- Tescom offers flexible fixtures that can change the location of the DUT fixture block. Depending on the shape of DUT, users can create its own fixture using fixture blocks within seconds. Moreover, customized fixtures that meet the demands of customers can be manufactured and supplied if necessary.
- The various types of antenna coupler options with fixtures allow optimal measurement environment configuration that fits the characteristics of each DUT.

Grid Fixture	Order Number	Description
	F59154A	<ul style="list-style-type: none"> • Antenna Coupler fixed type fixture • Antenna Coupler (Optional) : TC-93026A • 203(W) x 280(D) x 25(H) mm

SPECIFICATIONS SUBJECT TO CHANGE WITHOUT PRIOR NOTICE